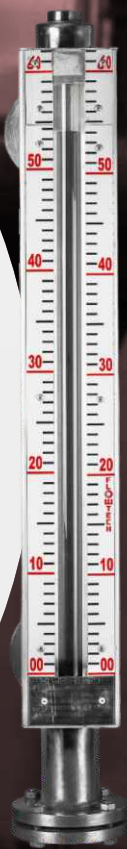


MAGNETIC LEVEL GUAGES

SMMLI/TMMLI Series



CE

FLOWTECH

Product Description

Flowtech makes a magnetic level gauge that provides a clear, high-clarity indication of the liquid level. Magnetic Level Gauges are principally designed as an alternative to glass level gauges.

Flowtech Measuring Instruments Pvt. Ltd. offers Magnetic Level Gauges in top-bottom, top, and side-mounted construction with two types of indicator systems i.e. Capsule and Bi-colour Rollers. Magnetic Level Gauge has three major components: Float Chamber, Float, and Indicator System. Magnetic Level Gauge operates on the principle of magnetic field coupling to provide Fluid Level Information. A float chamber is typically constructed with nonmagnetic pipe having process Connections that match the vessel connections. Float size and weight are determined by the process fluid, pressure, temperature, and the specific gravity of the process fluid. The float contains magnets to provide a 360° magnetic flux field.

Flowtech makes Top Mounted Level Indicator Substitute for the dip sticks method (for Horizontal & Vertical Tanks.) Corrosive acids like Sulphuric, Nitric, Chlorosulphuric, and Acetic Acids, Solvents like Benzene, Acetone, Toluene, OR any Organic Liquids like Butadiene, Vinyl Chloride. NO maintenance and NO motive power are required. Simple Non-Magnetic can offer where bi-colour PVC capsules mounted on the float move in a glass tube externally.

Design Feature

Indicator system is consists of bi-colour rollers equipped with magnets mounted on rail inside the housing. As the level starts rising or falling magnetic float also travels with liquid level in non magnetic chamber. The magnetic interaction between magnets in float and bi-colour rollers causes each roller to rotate 180°. We are providing high & low Level Switch adjustable.

Capsule Design

Indicator system consists of bi-colour Capsule which moves in glass tube inside the housing. As the level stars rising or falling magnetic float also travels with liquid level in non magnetic chamber. The magnetic interaction between magnets in float and capsule causes capsule to travel along with magnetic float. We are providing high & low Level Switch adjustable and Level Transmitter with 4 – 20 m Amps output.

Roller Design

Indicator system is consists of bi-colour Rollers equipped with magnets mounted on rail inside the housing. As the level starts rising or falling magnetic float also travels with liquid level in non magnetic chamber. The magnetic interaction between magnets in float and bi-colour rollers causes each roller to rotate 180°. We are providing high & low Level Switch adjustable and Level Transmitter with 4 – 20 m Amps output.

Flapper Design

Indicator system is consists of bi-colour Flappers equipped with magnets mounted on rail inside the housing. As the level starts rising or falling magnetic float also travels with liquid level in non magnetic chamber. The magnetic interaction between magnets in float and bi-colour Flappers causes each roller to rotate 180°. We are providing high & low Level Switch adjustable and Level Transmitter with 4 – 20 m Amps output.

Performance

- Reliable for aggressive, F.O, combustible, toxic, high pressure and high temperature (up to 150° C) liquid storage tanks.
- Side mounted magnetic level indicator most reliable & safe for dangerous application like LPG, Olekma, Chlorosulphuric Acid, HNO₂, Solvents like benzene, Toluene alcohols, Excellent visibility.
- Useful for Acid Alkali Solvent Oil, Vegetable Oil, Heavy duty type with Flange Joints & Gland Construction. Visibility tested at 10 Kg / Cm²

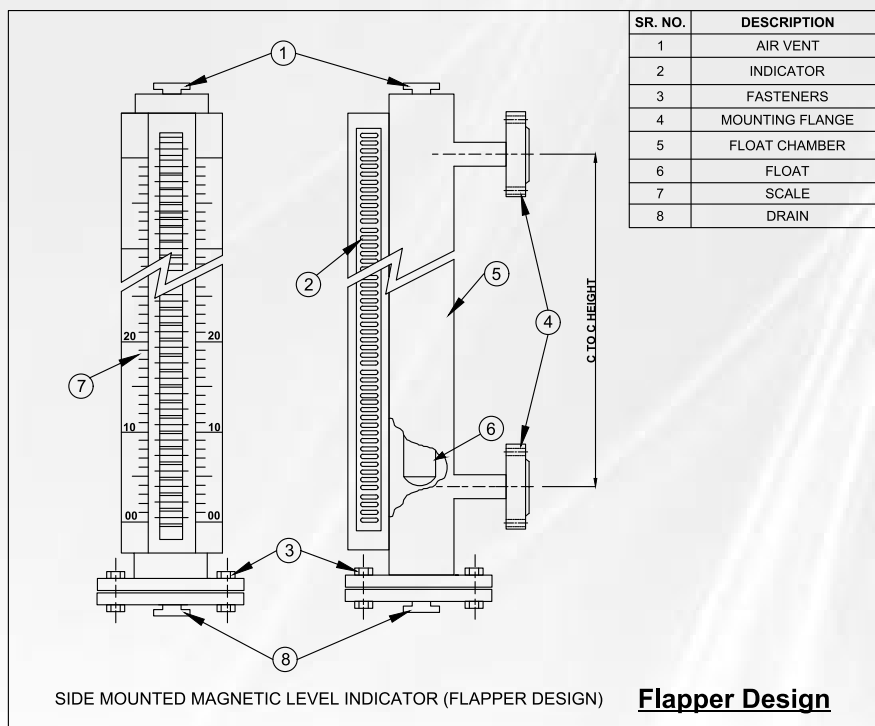
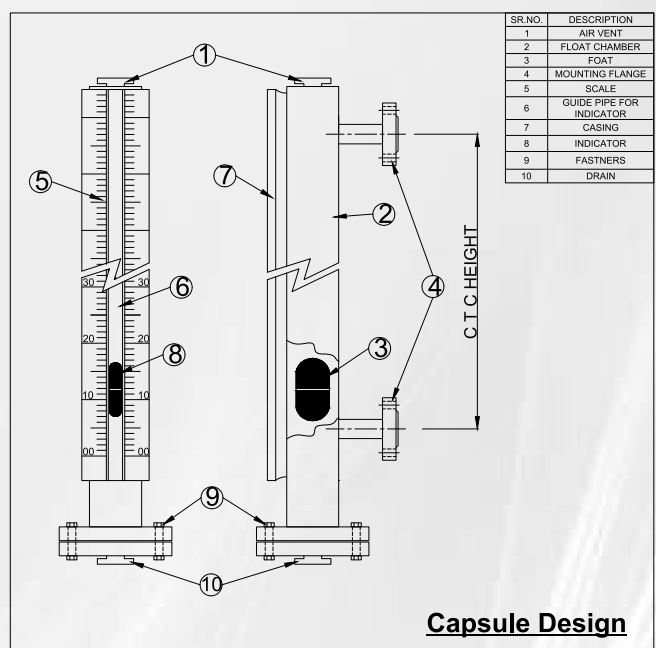
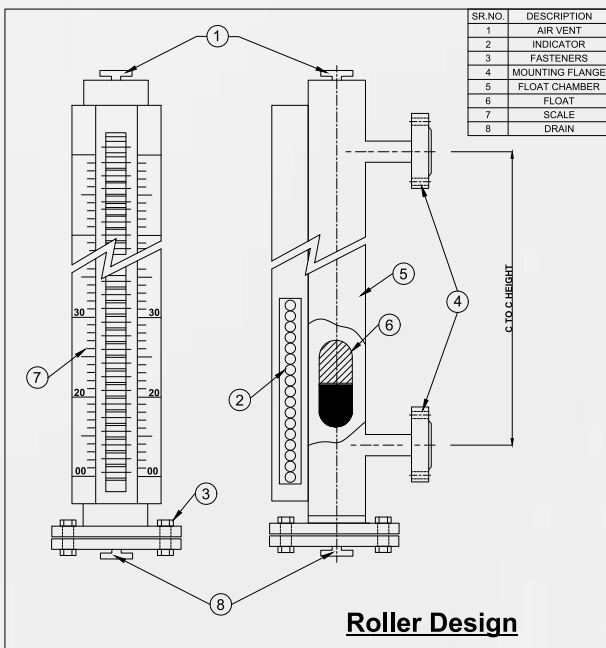
Material Of Construction

Type	Magnetic Level Guage
Mounting Orientation	Top Mounted/ Side Mounted & Top – Bottom
Indicator System	Bi-colour Rotating Roller / Capsule
Housing for Indicator	For Bi-colour Roller – RAIL in Aluminium or SS Housing System for Capsule – Heavy Walled Glass Tube in Aluminium / SS Housing
MOC of Indicator	ABS Plastic
Float Chamber	Non Magnetic Standard pipe
MOC of Float Chamber	SS 304/SS 304L/SS 316/ SS 316L/ PP/PVDF/Others on request
Float	SS 304/SS 304L/SS 316 /SS 316L/ PP/PVDF/Others on request
Process Connection	Flanged in various sizes
Vent	½" Plugged / ½" Needle Valve / ½" Ball Valve
Drain	½" Plugged / ½" Needle Valve / ½" Ball Valve
Scale	Aluminium / SS / Acrylic engraved in mm
Limit Switch Assembly	Snap Acting 1 SPDT Micro switch, 5A, 230 VAC or 24 V DC X 2 Amp reeds Switch
Level Transmitter	Input: 230 V AC OR 24 V DC Output: 4 – 20 m Amps.
Switch Housing	Aluminium Die Cast Weatherproof to IP – 65 Aluminium Die Cast Explosion proof suitable for Group IIA, IIB Aluminium Die Cast Explosion proof suitable for Group IIC
Electrical Cable Entry	¾" ET (F)
Centre to Centre Distance	Bi-colour Rollers – up to 6000 mm Capsule – up to 6000 mm
Max. Operating Pressure	15 Kg/cm ² (others on request)

Manufacturing Range

Type	Side Mounted	Top Mounted
Range mm	500-6000mm	300-8000mm
Accuracy mm	± 5-10	± 10-15
Flange NB mm	20-50	100-200
Specs	DIN/ASA/BS	DIN/ASA/BS
Pressure Vac to.	30 Bar	30 Bar
Materials	SS 304/ SS 316/ P.P	SS 304/ SS 316/ P.P

GA Drawing



Product Ordering Information

Order Code for Side Mounted

FMIPL	Description	Code
	Side Mounted	SM
	Top Mounted	TM

Type	Description	Code
	PVC Capsule Design	C
	PVC Roller Design	PR 1
	Aluminum Roller Design	AR
SS Flapper	SF	

Wetted Parts	Description	Code
	SS 304	S 1
	SS 316	S 2
	Poly Propylene	PP
	SS 304 with PTFE Lined	S1T
SS 316 with PTFE Lined	S2T	

Float	Description	Code
	SS 316	1
	Poly Propylene	2
	SS 316 with PTFE Lined	3
Titanium	4	

Scale	Description	Code
	Aluminum	1
	Acrylic	2
	SS 304	3
	SS 316	4

Connection	Description	Code
	Flanged	F
	Socket	S
	Screwed	T
	Triclover Joint	TC

Switches	Description	Code
	Not Required	0
	One No. Adjustable	1
	Two Nos. Adjustable	2
Three Nos. Adjustable	3	

Type of Switches	Description	Code
	Not Required	0
	24 V DC Reed Switch	1
	230 V AC Reed Switch	2
Snap Action Micro Switch	3	

Transmitter with 4-20mA Output	Description	Code
	Not Required	1
	24 V DC Power Supply	2
230 V AC Power Supply	3	

Air Vent	Description	Code
	Stop Plug	1
	1/2" Ball/Middle Valve	2
	Blind Flange	3

Drain	Description	Code
	Stop Plug	1
	1/2" Ball/Middle Valve	2
Blind Flange	3	

Rating	Description	Code
	150 # RF	1
	300 # RF	2
	BS 10 Table 'E'	3
	BS 10 Table 'F'	4
	BSP	5
NPT	6	

Mounting	Description	Code
	1/2" NB	1
	3/4" NB	2
	1" NB	3
	1.5" NB	4
	2" NB	5

Switch Enclosure	Description	Code
	Not Required	N
	Weather Proof	W
	Flame Proof	F
Explosion Proof	E	

FLOWTECH

Scan QR to Connect



Flowtech Measuring Instruments Pvt Ltd

sales@flowtech-instruments.com
flowtech-instruments.com

