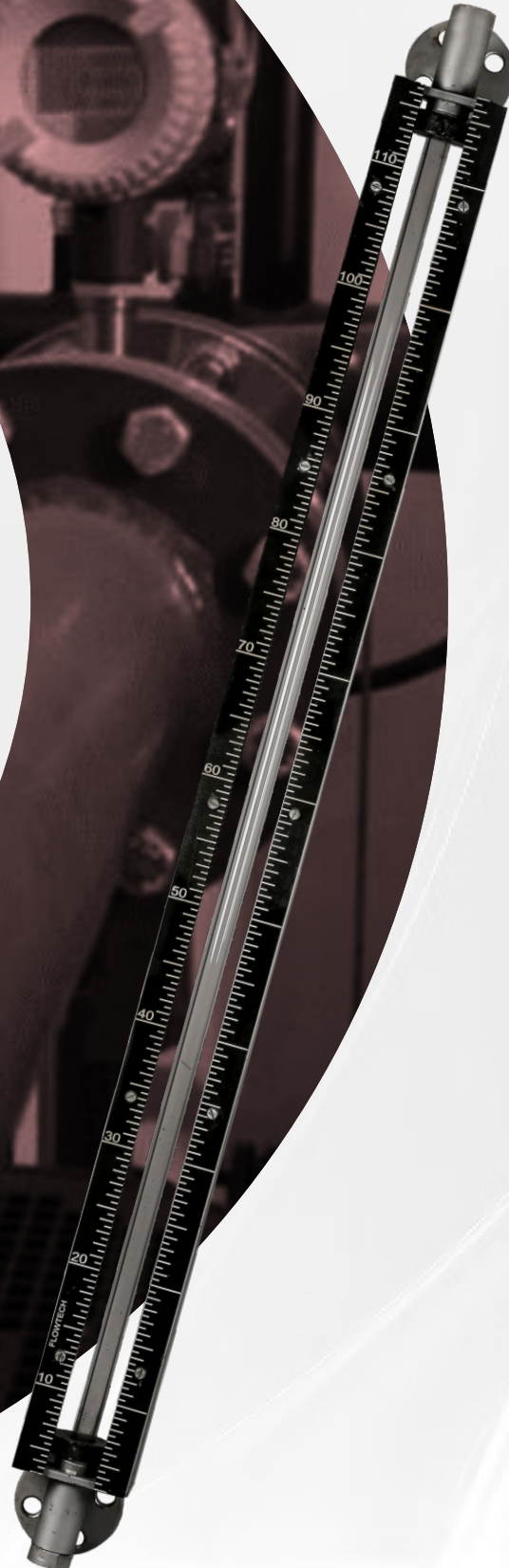


TUBULAR LEVEL INDICATOR

TLI - Series



CE

FLOWTECH



Product Description :

Tubular Level Gauge is the simplest form of level indication. Flowtech Measuring Instruments offer economical and reliable level gauges for direct reading of liquid level in tanks / vessels. Tubular Level Gauges are used to visualize the level in low or medium pressure application.

Tubular Level Gauges are mounted on the side of the tank / vessel. It consists of Glass Tube, Packing Material, End Blocks and Isolation Valves, vent plug, drain valve etc.

Working Principle :

The Gauge is fitted between two end blocks through gland packings. The gauge is mounted parallel to tank so as to form a close loop causing tank liquid to seek its level in gauge. Guards are provided in the form of tie-rods / c - channels around the gauge to protect it from accidental blows. End blocks have built-in-isolating valve, drain valve and vent plug.



Tubular Level Indicator



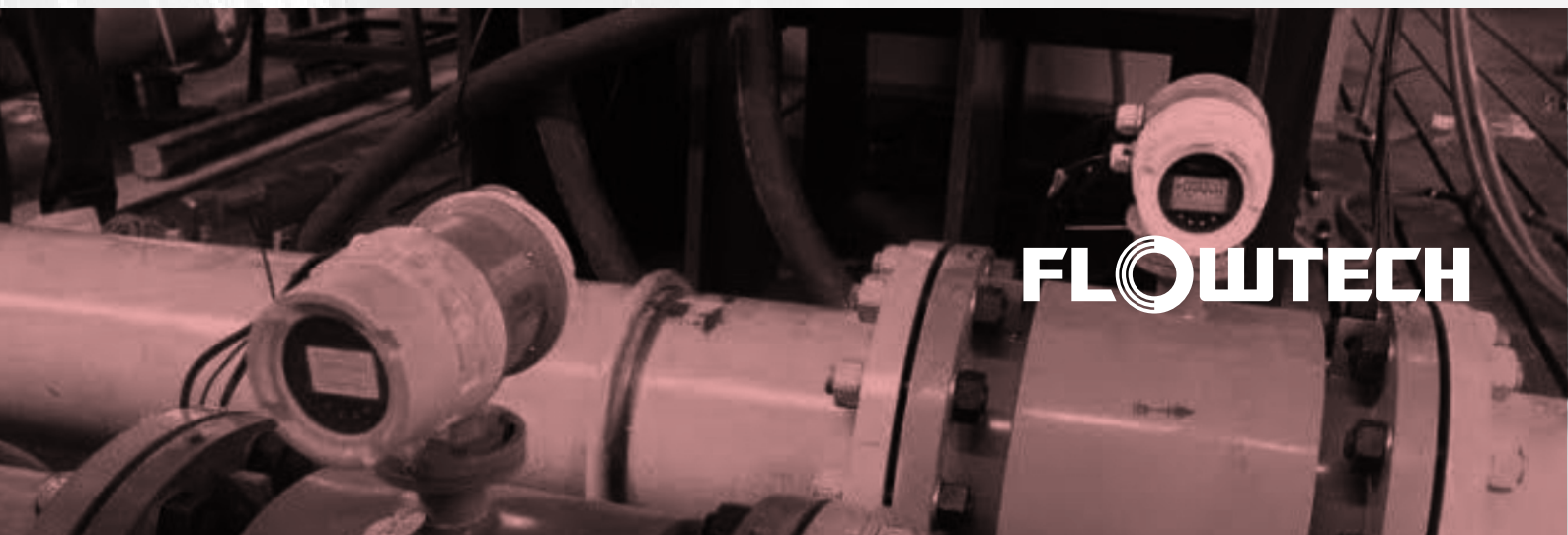
PP Tubular Level Indicator



Tubular Level Indicator PTFE Lining

Specifications

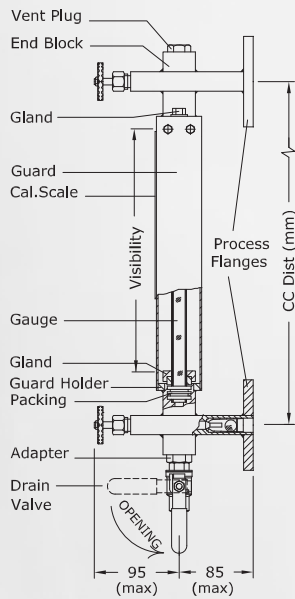
1. The top & bottom Liquid Chamber of indicator is made of solid bar & Glass Tube (Borosilicate) is fully protected by Box Section made out of 2mm thick M.S. channel. The strength of the box is so good that even if a man stands on the indicator, supported at both ends, the tube remains intact
2. We are using 100% PTFE (TEFLON) rope in packing to ensure positive leak tightness for full vacuum as well as 6Kg /Cm² service pressure
3. As compared to reflex & transparent type level gauge, this Tubular Level Indicator is light in weight
4. It is available in single length of 3000mm C/CDistance. We can extend the length by coupling 2 or more through coupler
5. We are providing Air Vent Plug at top & drain plug at bottom for taking sample. We can also provide In built Isolation Valve on request
6. It is simple and reliable device for direct reading in atmospheric or pressurized (below 5 Kg/cm²) tank application
7. It Eliminates trouble giving threaded joints of Conventional Gauge Glass Cock as hazardous Chemicals Startleaking
8. Glass Tube (Borosilicate Boiler Quality) is fully protected by guard Rods or Box Section made of 'C' – Channel
9. Offset Constructed Isolation Valve on request
10. The connection provided will be Flanged /Screwed/TC Joint



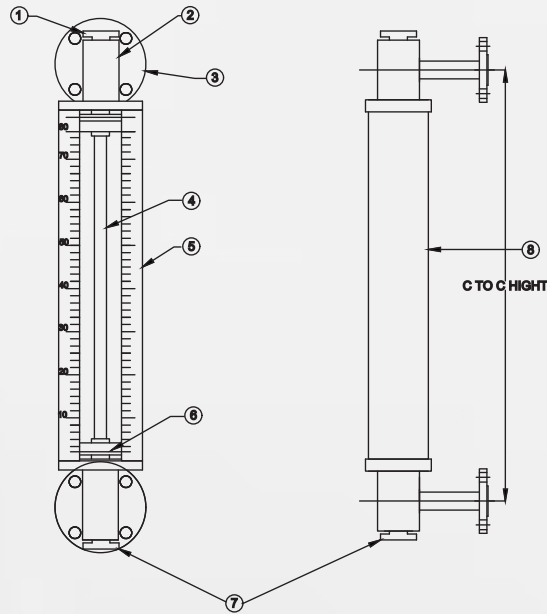
Technical Specifications

Type	Tempered borosilicate heavy wall 19mm or 25mm OD			
End Block MOC	CS/ASTM/A105/SS304/316/316L	PP OR PVDF	PTFE Lined SS304/MS	SS316/316L
End Block Type	1) Without Valve 2) Integral Offset Needle Valve 3) Integral Offset Needle Valve with autoball check		Without Valve	Without Valve
Autoball Check MOC	SS316/316L	PP OR PVDF capsule with PTFE ball	NA	NA
'C' Channel Gaurds	CS,SS304,SS316	FRP	Ss304	Ss304
Tie Rods Gaurds	CS,SS304	CS,SS304	SS304	Ss304
Packing	PTFE			
Gland MOC	CI/SS316	PP	SS316/PP	Ss316
Process Connection	Flanged, Screwed,TC	Flanged, Screwed	Flanged	
Vent & Drain MOC	CS/ASTM/A105/SS304/316/316L	PP OR PVDF	PTFE	SS316/316L
Vent 16 mm Gauge Glass 19 mm Gauge Glass 25 mm Gauge Glass	1/2" BSP Plug or Ball Valve (with Plug If reqd.) 3/4" BSP Plug or 1/2" Ball Valve (with Plug If reqd.) 1" BSP Plug or 1/2" Ball Valve (with Plug If reqd.)		3/4" NB PTFE Lined SS304 Blind Flanged	
Drain	1/2" BSP Plug or Ball Valve (with Plug If reqd.)		3/4" NB NB MS/SS304/SS316 PTEF Lined Blind Flanged	
Scale MOC	Acrylic or Polycarbonate (Screen Printed), SS304(etched)			
Scale Calibration	mm (LC = 5 mm), cm (LC = 0.5 cm)			
CC Distance	300 to 1500 mm in single section & upto 3000 mm in dual section. Dual Section achieved through flanged coupler			
Visibility	CC Distance - 70 mm to 100 mm			
Max Temperature	150°C	70°C PP 100°C PVDF	100°C	
Test Pressure at Amb Temperature	Vacumm to 10 KG/cm ²	Vacumm to 2 KG/cm ²	Vacumm to 2 KG/cm ²	
Accessories	1) Tank isolation valves with nuts. bolts & gaskets			
	2) Counter Flanges with nuts, bolts, & gaskets			
Special Features				
Glass Protector	3mm thick prespex shield to protect gauge glass & for personnel safety			
Auto Ball Check	Ss316 or PTFE ball to minimize liquid loss during glass breakage			
Jacketing	For preventing solidification of process liquid. it consist of a SS pipe with "NPT (F)" inlet & outlet at bottom & top end blocks for heating/cloing agent.			

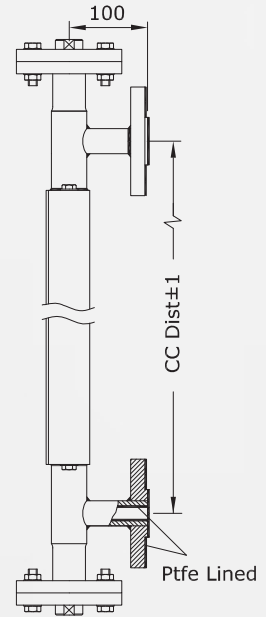
Construction & Operation



Metallic/PP/ PVDF End Block Flanged Connection

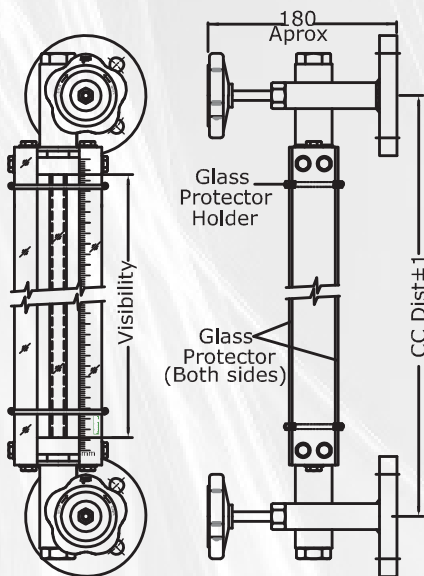


Without Isolation valve

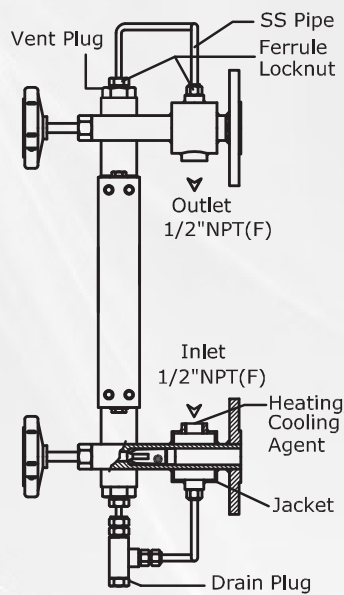


PTFE lined SS304 End Block with Flanged Connection

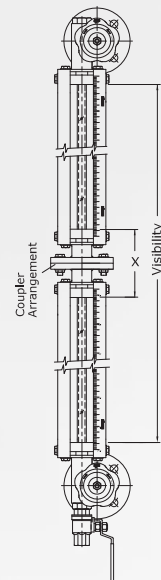
Special Features



Glass Protector

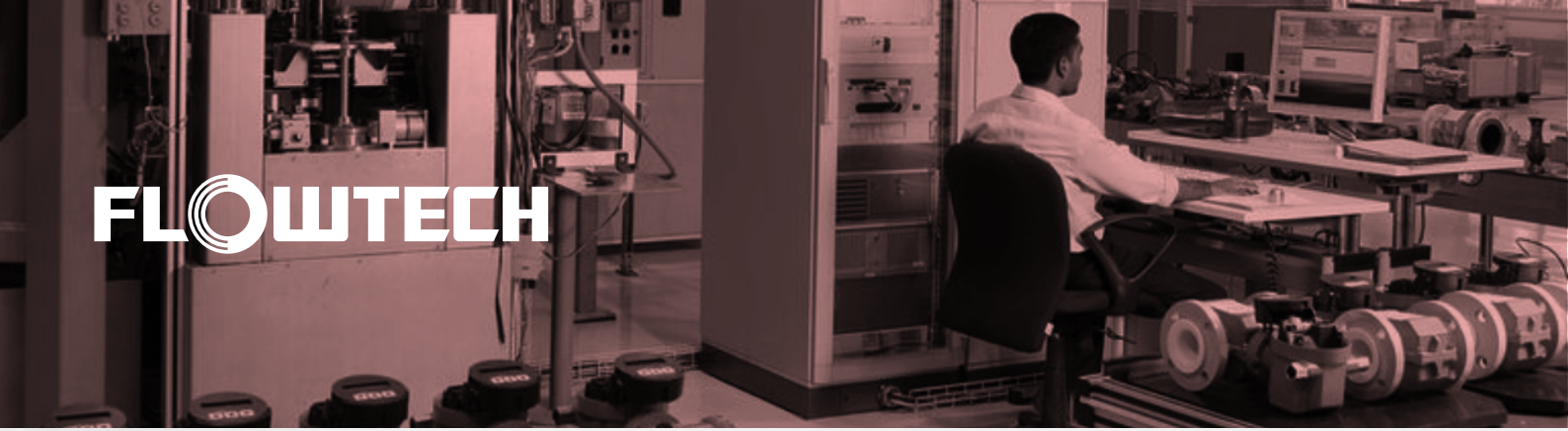


With Jacketing



X= 1) 180mm (metallic)
2) 210mm (pp)

Dual Section with Flanged Coupler Arrangement



Product Ordering Information

Order Code for Tubular Level Indicator Decodification

Installation Valve	Description	Code
	Not Required	0
	MS Offset Design	1
	SS 304 Offset Design	2
	SS 316 Offset Design	3
	Polupropelene	4

Mounting	Description	Code
	1/2"	15
	3/4"	20
	1"	25
	1.25"	32
	1.5"	40
	2"	50
3"	80	

Rating	Description	Code
	ASA 150 #RF	1
	ASA 300 #RF	2
	BSP (M)	3
	BSP (F)	4
	NPT (M)	5
	NPT (F)	6
	TC Joint	7
Others	OTH	

End Block MOC	Description	Code
	CS	1
	SS 304	2
	SS 316	3
	PP	4
	MS+PTFE Lined	5
	Aluminum	6
Others	OTH	

Drain	Description	Code
	Stop Plug	1
	1/2" Needle Valve	2
	1/2" Ball Valve	3

Air Vent	Description	Code
	Stop Plug	1
	1/2" Needle Valve	2
	1/2" Ball Valve	3
Others	OTH	

Borosilicate Glass Tube	Description	Code
	19mm Dia	1
	25mm Dia	2
Others	3	

Protective Channel	Description	Code
	CS	1
	SS 304	2
	SS 316	3
	PVC	4
	FRP	5
	MS Tie Rod	6
	SS Tie Rod	7

Flanges	Description	Code
	MS	1
	SS 304	2
	SS 316	3
	MS+PTFE Lined	4
	Polypropelene	5
	Others	OTH

FLOWTECH

Scan QR to Connect



Flowtech Measuring Instruments Pvt Ltd

sales@flowtech-instruments.com
flowtech-instruments.com

